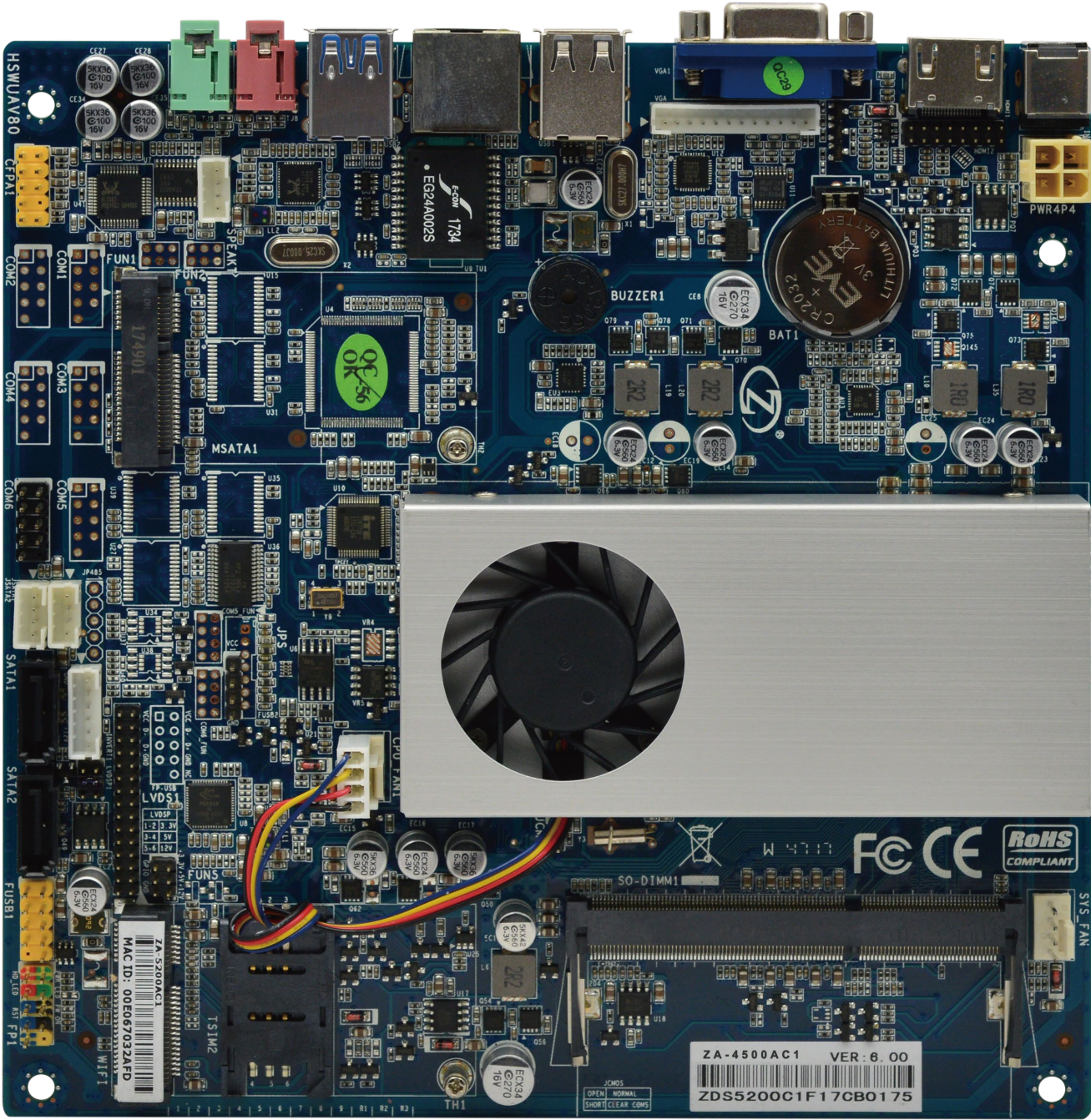


# ZA-4th/5th Motherboard

## User Manual

Support Intel<sup>®</sup> 4th/5th Core<sup>™</sup> Corei7/Corei5/Corei3 Processor

# ZA-4th/5th Motherboard Diagram

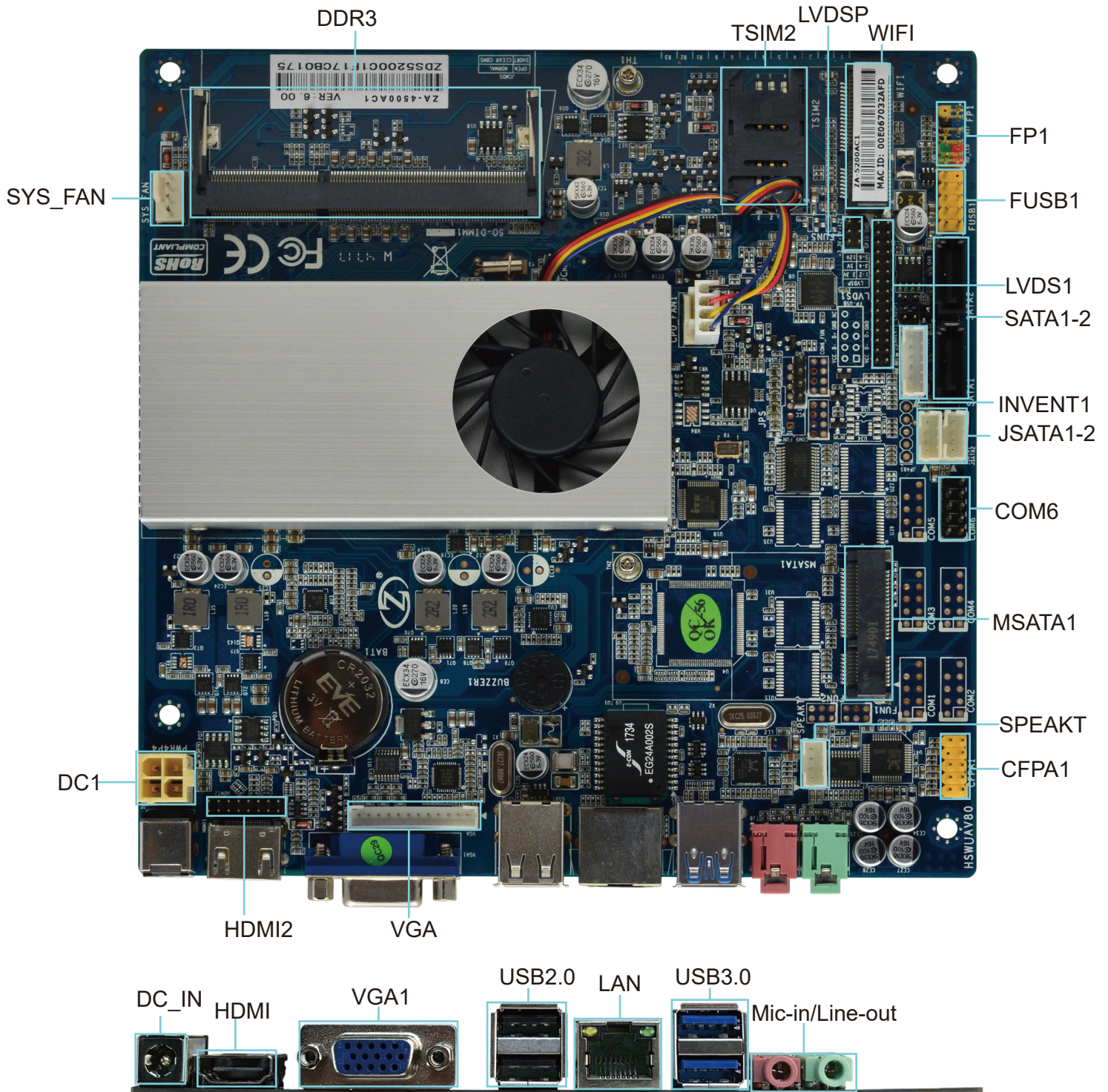


# Motherboard Specification

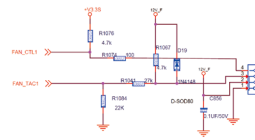
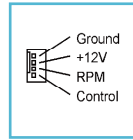
Size	170mm x 170mm
CPU	Support Intel 4th/5th Core Corei7/Corei5/Corei3 Processor
Graphics	Intel HD Graphics
Chipset	Intel 4005U/1200U/4500U/5005U/5200U/5500U
Memory	1*DDR3,1333/1600 MHz,204 Pin,SODIMM Slot,Up to 16GB
Internal I/O	2*USB PIN,Support 3* USB2. 0 1*CPU Fan And SYS Fan 1-6 Group Serial Port Pin 1*2x2 PIN Power Socket 1*1x12 VGA Pin 1* SATA 1*Audio Pin Port
Rear I/O	1*DC Power Input (12V) 1*HDMI 1*VGA 2*USB2.0 2*USB3.0 1*LAN 1*Mic-in/Line-out
BIOS AMI	AMIBIOS,64M bit Flash Memory
MINI_PCIE	1*Support (MSATA) 1*Support (WiFi)
SATA	1*SATA,1*MSATA
LAN	1*Realtek 8111E,10/100/1000
Audio	ALC662 Dual Channel Output
Operating System	Windows7 Windows8 Windows10 Linux
H/W Monitoring	Wake on LAN System Power Management Temperature Management Voltage Management
Humidity	0% ~ 95% (Relative Humidity,No Condensation)
Temp	-10°C ~ 55°C



# Motherboard I/O Interface Diagram



SYS\_FAN  
CPU\_FAN



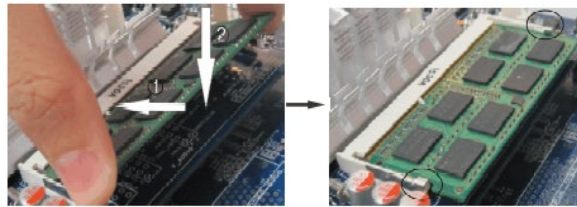
Note: these fan connectors are not jumpers, and the jumper cap is placed above the head.

DDR3

Installation memory:

1. Please turn off the power before installing or removing the memory, and dial down the AC power cord.
  2. Carefully hold both ends of the memory stick, and do not touch the metal contact above.
  3. Align the gold fingers of the memory stick with the memory stick slot, and pay attention to the convex point of the gold finger socket to the upper slot in the direction;
  4. Insert the memory stick 30 degrees into the memory slot, and then press the memory stick down to the sound of "click"
- The memory has been installed successfully and can be used (note: press down the memory bar to avoid damaging the memory too much)

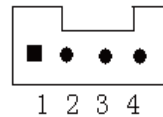
Memory installation diagram (for reference only) :



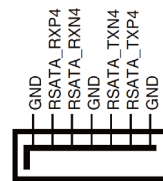
Note: static electricity damages electronic components of a computer or memory, so before following these steps, Be sure to touch the grounded metal objects briefly to remove static electricity from your body.

JSATA1-2

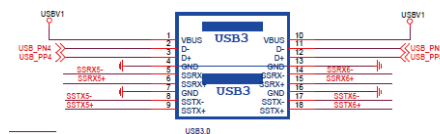
+5V 2. GND 3. GND 4. +12V



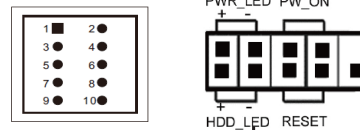
SATA 2



USB3.0  
USB3.0



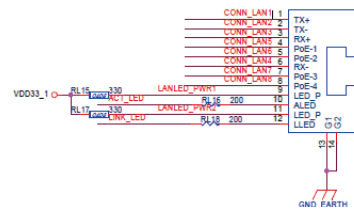
FP1



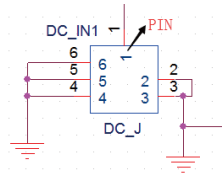
Pin	Define	Pin	Define
1	HDD LED+	2	PWR LED+
3	HDD LED-	4	GND
5	GND	6	P_SWIN
7	RESET_GND	8	GND
9	GND		

HDD Active LED:1,3 Power Button:6,8  
Power LED:2,4 Reset Button:5,7

LAN

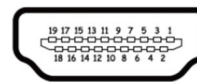


12/19VDC



Pin	Define	Pin	Define
1	DC_IN	2	DC_J
3	GND	4	GND
5	GND	6	GND
7	GND	8	GND
9	GND		

HDMI

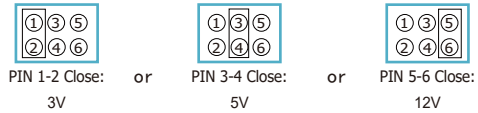


Pin	Define	Pin	Define
1	TMDS data 2+	2	TMDS data shield
3	TMDS data 2-	4	TMDS data 1+
5	TMDS data shield	6	TMDS data 2-
7	TMDS data 0+	8	TMDS data shield
9	TMDS data 0-	10	TMDS clock+
11	TMDS clock shield	12	TMDS clock-
13	CEC	14	No connectde
15	DDC clock	16	DDC data
17	Groud	18	+5V power
19	Hot plug detect		

EDP2

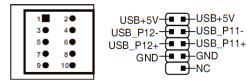
Pin	Define	Pin	Define
1	VCC	2	VCC
3	VCC	4	GND
5	GND	6	HDP
7	DPON	8	DPOP
9	DP1N	10	DP1P
11	NC	12	NC
13	GND	14	GND
15	AUX_N	16	AUX_P
17	NC	18	NC
19	NC	20	NC

LVDS1



Pin	Define	Pin	Define
1	LCDVDD	2	LCDVDD
3	LCDVDD	4	GND
5	GND	6	GND
7	LVDSA_DATA0N	8	LVDSA_DATA0P
9	LVDSA_DATA1N	10	LVDSA_DATA1P
11	LVDSA_DATA2N	12	LVDSA_DATA2P
13	GND	14	GND
15	LVDSA_CLKN	16	LVDSA_CLKP
17	LVDSA_DATA3N	18	LVDSA_DATA3P
19	LVDSB_TX0N	20	LVDSB_TX0P
21	LVDSB_TX1N	22	LVDSB_TX1P
23	LVDSB_TX2N	24	LVDSB_TX2P
25	GND	26	GND
27	LVDSB_CLKN	28	LVDSB_CLKP
29	LVDSB_TX3N	30	LVDSB_TX3P

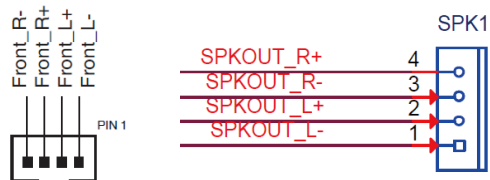
FUSB1



FUSB1

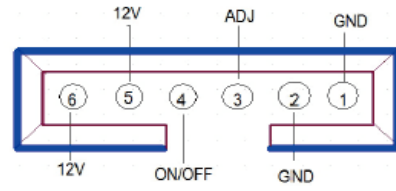
Pin	Define	Pin	Define
1	VCC	2	VCC
3	DATA 0-	4	DATA1-
5	DATA0+	6	DATA1+
7	GND	8	GND
9	NC(CUT)	10	GND

SPK1



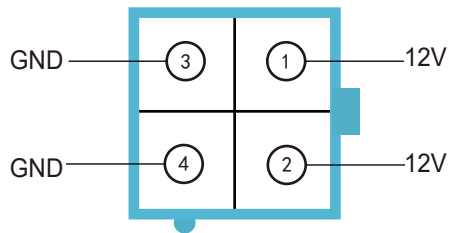
Pin	Define	Pin	Define
1	SPKOUT_L-	2	SPKOUT_L+
3	SPKOUT_R-	4	SPKOUT_R+

INVERT



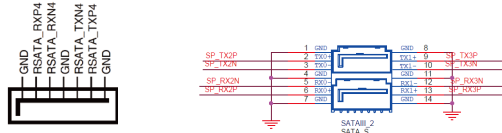
Pin	Define	Pin	Define
1	GND	2	GND
3	ON/OFF	4	ADJ
5	12V	6	12V

DC1

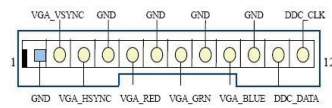


Pin	Define	Pin	Define
1	12V	2	12V
3	GND	4	GND

SATA1-2



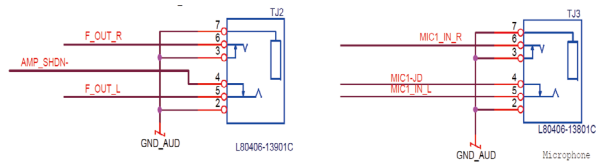
VGA



Pin	Define	Pin	Define
1	GND	2	VGA_VSYNC
3	VGA_HSYNC	4	GND
5	VGA_RED	6	GND
7	VGA_GRN	8	GND
9	VGA_BULE	10	GND
11	DDC_DATA	12	DDC_CLK



Mic-in/Line-out



\*Other Matters Please consult the sales.